



**Havering**  
LONDON BOROUGH

# Localities Update Health & Wellbeing Board Jan 2019

- **The background**
- **Localities model**
- **What we are achieving together**
- **Our next steps within the wider transformation context**
- **Questions?**

**This presentation provides an update on how our focus on developing ‘Localities’ we are collectively contributing to the aspirations set out in the King’s Fund report in respect of pillar 3:**

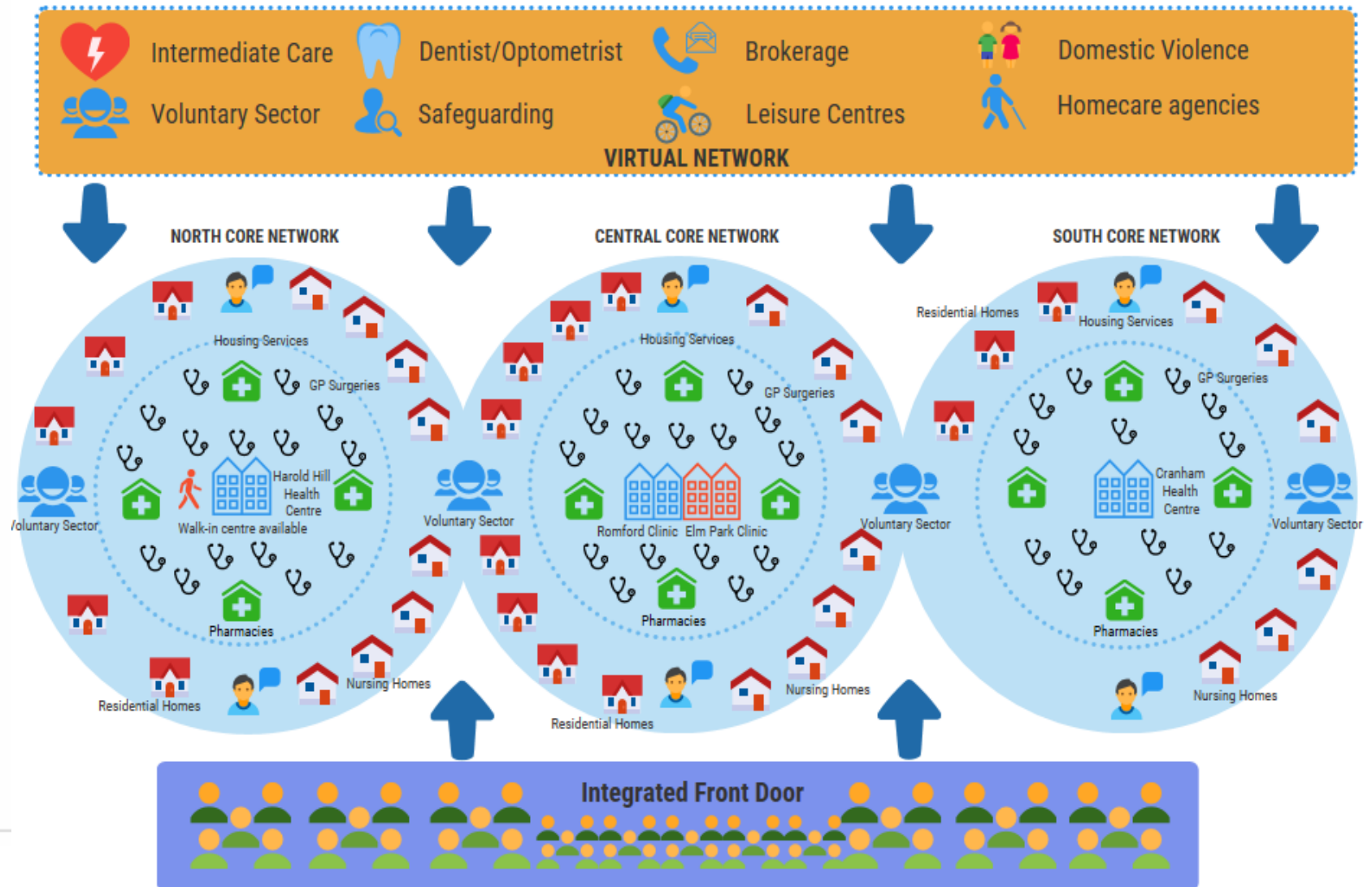
**Pillar 3: The places and communities we live in**

There is increasing recognition of the key role that places and communities play in health (including mental health), including the impact of social relationships and community.

- **Health and Care Devolution**
- **a new locality model in that it will focus on prevention; build social capital; provide holistic wrap around care and support for individuals and create a broader coherent range of services, networks and pathways in defined areas of the borough**

**BHR Strategic Outline Case for an Accountable Care Organisation (ACO) Nov 2016**

# The Localities Model



## Co-location

**NOW**

- ✓ **4 Locality Teams for PD/Frailty**
- ✓ **Community Mental Health Teams**
- ✓ **Learning Disability Team**
- ✓ **Hospital Discharge**

**NEXT?**

- **To move from 4 to 3 Localities (N, C & S)**
- **Co-location into new facilities**
- **Move to a Single Point of Access**
- **Place Based Care pilot**

## Prevent, Reduce, Delay

### NOW

- ✓ Reablement
- ✓ Voluntary Sector
- ✓ Supported Living
- ✓ Extra Care Housing
- ✓ Shared lives
- ✓ Drug and Alcohol services
- ✓ Managed interface between hospital and community
- ✓ Sexual health mobilisation

### NEXT

- **Re-commissioned reablement**
- **Voluntary sector opportunities for integrated commissioning**
- **Closer working with Housing – developing local supported housing**
- **New providers and models**
- **Integrated care models and developed joint commissioning**
- **Sexual health jointly commissioned service development**

**The Place Based Care Networks** - the opportunity to transform the way people experience their care and support centered around GP networks

**The Better Living model** – strengths-based practice

**Local Area Coordination** takes the strengths-based approach into the community to build community resilience.

**Children's Universal Plus** - joined up approach to Early Help in order to create a cohesive service for families



- **Supported and affordable housing options**
- **Built environment**
- **Community Hubs**
- **Homelessness solutions**
- **One Public Estate**

**Integrating our Commissioning** - focus on bringing the design and investment together to better support communities to be resilient and self-managing as far as possible and making best use of collective resources.



# Havering

LONDON BOROUGH

## Questions?